

COMPANY PROFILE: MAXON MOTOR

maxon motor

driven by precision

Medication delivery systems are vital for the survival of patients. New technologies and the expertise it takes to understand and use them are a must for designing absolute reliability into these systems, which will remove risk and reduce costs for hospitals and users alike.

Market drivers for delivering automated and semi-automated drug delivery systems are many. The growth over the past few years in e-health is a primary one. More and more applications are coming into the marketplace that provide e-health services, from setting a smart phone app to remind a person when to take their pills, to providing a device to deposit those pills, to collecting physical data about a person's body in order to sound an alarm when a problem occurs.

Another important focus has been in the growing move towards the creation of liquid medications to make delivery simpler, as well as fully automatic. At the moment, pharmaceutical companies are involved in the research and production of a variety of

liquid forms of medication that can easily be tailored to a specific person's needs.

"Liquid dosing is not new, but through the use of the right delivery systems – ones that are accurate, repeatable, long lasting and quiet – medicines can be delivered locally."

The impact of protein- and gene-based therapies has also been limited by the need for better methods of delivery into cells within tissues. The ability to provide medication in this way will affect a variety of fields, including micro-molecular delivery of proteins, hormonal injections and even specialised genetic therapies, all of which

will revolutionise the potential to provide services in the medical industry.

Liquid dosing is not new, but through the use of the right delivery systems – ones that are accurate, repeatable, long lasting and quiet – medicines can be delivered locally. What this means is that the whole body does not have to be medicated in order to deal with a local ailment. For example, why take a painkiller for your whole body if your only problem is a sore knee or elbow. Local, automatic delivery will decrease the overall amount of medication that has to go into a person's body, which will eliminate a lot of unnecessary side effects and decrease the amount of the medication being used. Plus, for serious patient care, the ability to deliver medication locally will eliminate the possibility of someone becoming addicted to the painkiller or other drug.

User requirements for drug delivery systems include comfort for the user, which means it must be super compact to fit seamlessly into a person's life. The device must produce very low noise, offer extremely long battery life and be flexible enough to fit into all aspects of the person's life. The new systems must be water resistant, chemical resistant, and mechanically and electronically robust in every way.

Some of the devices already on the market include ambulatory infusion pumps, patch pumps for insulin delivery, linear peristaltic pumps, rotary peristaltic pumps and tiny implantable pumps for those with chronic pain (Figures 1 and 2).

maxon offers their expertise in finding the perfect drive solution for whichever drug delivery system chosen. For example, it has designed an artificial pancreas with a dual pump that measures the blood sugar amounts and delivers insulin and glucagon to balance those blood sugar levels. Such a device needs to be the size of a

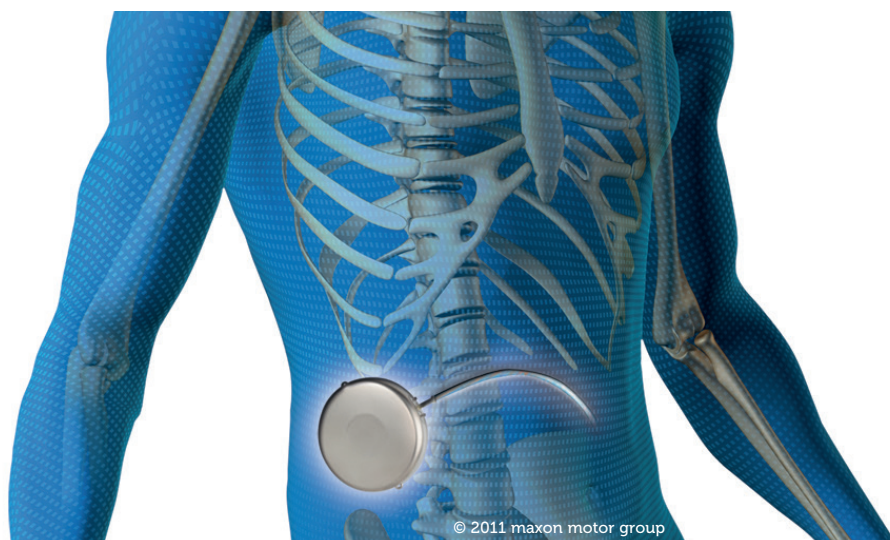


Figure 1: The active implant is implanted in the lower abdomen directly underneath the skin.

"maxon continues to create delivery systems for medical use that offer some of the smallest micro drives – that are not only compact but offer low noise and provide high-efficiency – while maintaining a user-friendly interface to control systems of all types."

match box and mounted as a patch pump or wearable to the body.

For more invasive, implantable pumps, maxon has designed and manufactured a device using biocompatible materials in the manufacturing process. For example, the company uses titanium, which requires a high level of expertise to machine and laser weld. The entire assembly of the implantable microdrive takes place under cleanroom conditions.

maxon continues to create delivery systems for medical use that offer some of the smallest micro drives – that are

not only compact but offer low noise and provide high-efficiency – while maintaining a user-friendly interface to control systems of all types. There must never be any concern over the ability for the systems to co-operate, especially in life-or-death situations in which drug delivery systems must often serve their function. Trust in the components being used is a requirement.

Presently, maxon has specialist teams working on the next generation of drive solutions for drug delivery as well as permanent and disposable devices for numerous applications based on syringes as well as needle-free solutions. The company's expertise allows it to design and manufacture complete systems for a multitude of specific applications.

Since 1961, maxon motor has researched and developed a growing line of products and services, including integration of many systems for the medical

and pharmaceutical industries. More than 2,100 employees work worldwide, with production sites in Switzerland, Germany, Hungary and South Korea, as well as sales companies in more than 30 countries.

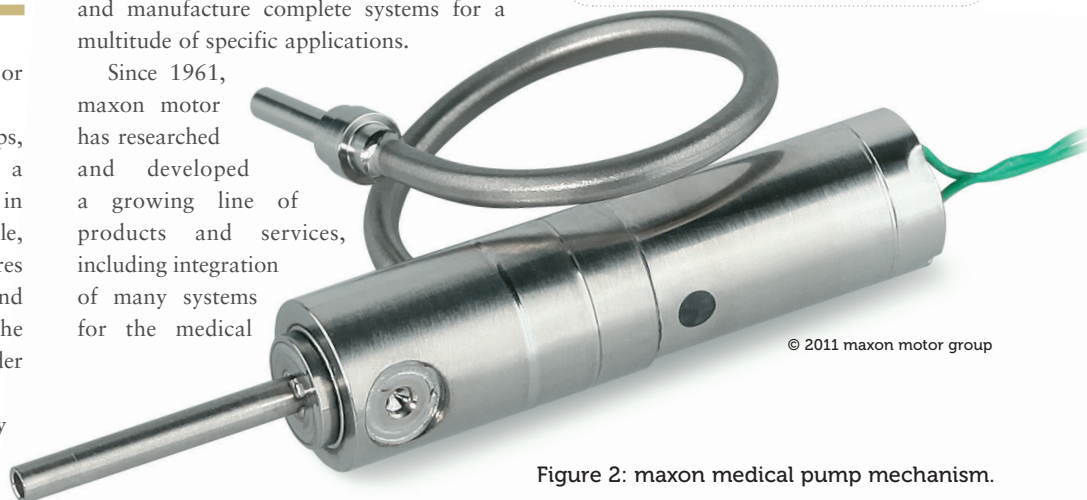
Carsten Horn

Executive Manager/Product Manager
E: drugdelivery@maxonmotor.com
T: +49 7641 9114 0

maxon motor GmbH

Untere Ziel 1
79350 Sexau
Germany

www.maxonmotor.com



© 2011 maxon motor group

Figure 2: maxon medical pump mechanism.

Now in its
9th year

Injectable Drug Delivery Annual Conference

21-22 March 2016, Le Méridien Piccadilly Hotel, London

Mf
MANAGEMENT
forum

SAVE £200/€280 when using promotional code ODDOCT16 when registering online

This conference will discuss the state-of-the-art technology being applied in the parenteral field and will look at advances in compliance monitoring.

Programme

- Speeding up time to market with platform products and customer-specific
- Customization of pens and auto-injectors
- Novel aseptic foil sealing development for a new auto-injector
- Transforming the patient experience with a computer-controlled needle-free device
- Injected drug delivery: The challenge and opportunity offered by connectivity
- SteadyMed's Patchpump TM Technology
- The Requirements and unique challenges in the testing of on-body delivery systems
- Improving adherence for injectable drugs
- Leveraging a device platform - some of the considerations
- High viscosity, high volume (HVHV)
- User interface (UI) design considerations for electronic drug delivery devices
- SAN-DVs, safe auto-needles for use with drugs in vials

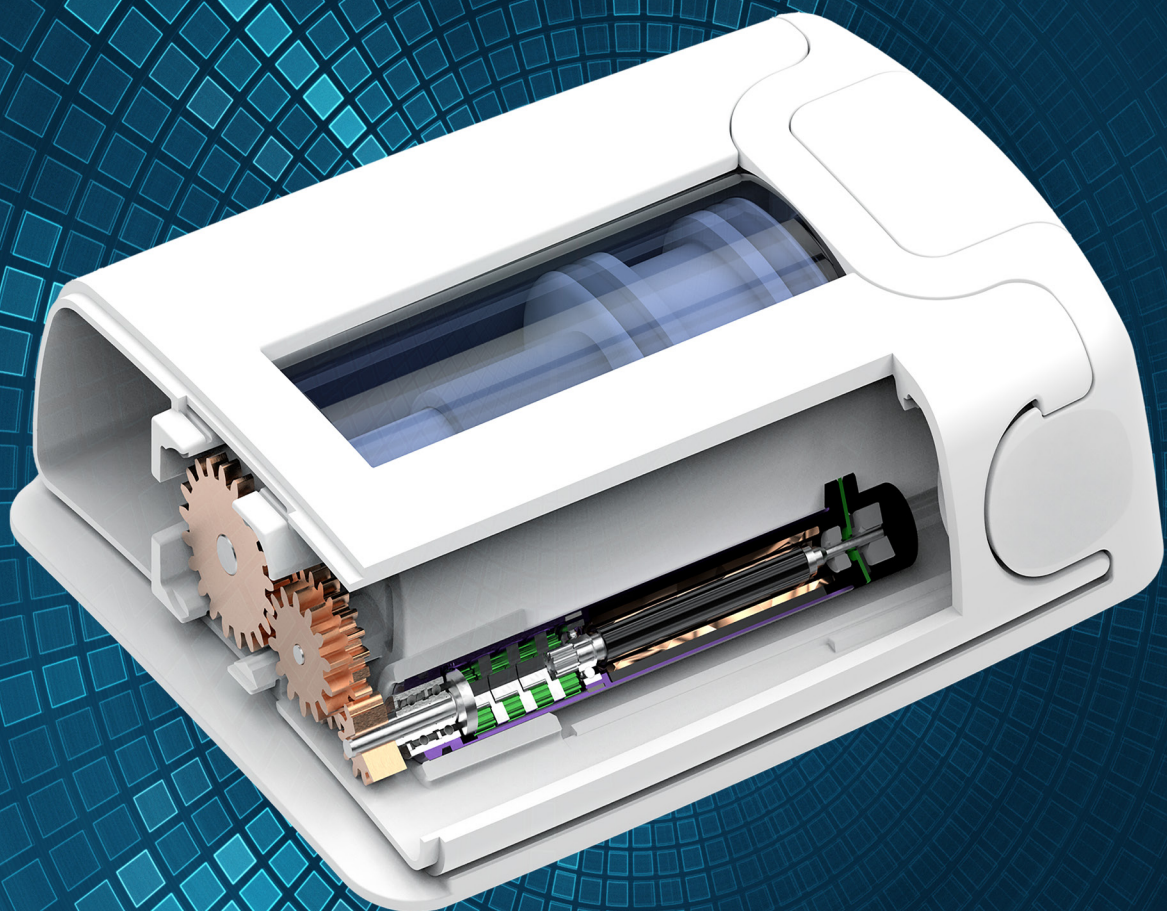
3 easy ways to book

management-forum.co.uk

info@management-forum.co.uk

+44 (0)20 7749 4730

Beyond Drive Solutions...



maxon is your single source partner for
advance **Drug Delivery Systems.**

**Providing customized services to bring
your ideas to market faster.**

maxon motor GmbH
Untere Ziel 1, 79350 Sexau, Germany
Phone: +49 7641 9114 0 / E-Mail: drugdelivery@maxonmotor.com

www.maxonmotor.com

maxon motor

driven by precision